



Lick of the Week

#19 Lick Using The Diminished 6th Scale

Lick Using The Diminished 6th Scale

The 6th diminished scale is a scale advocated by the educator and pianist Barry Green who jokingly called it his "*personal scale*".

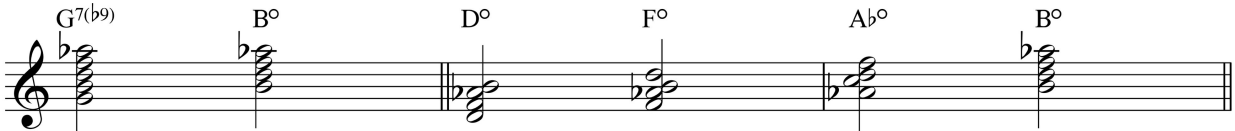
The scale is basically a major scale with the addition of a flattened 6th.

In the key of C the scale would look like this;



One of its primary uses of the scale is to create harmonised passages alternating between inversions of a major 6th chord and a diminished chord, hence the name **6th diminished scale**.

The diminished chord functions as a dominant 7th b9 chord, it shares many of the same notes.



The diminished chord can be named after any of the notes in the chord and the chord could potentially have four names. It is easier to think of it being named after just one, in this case D diminished.

Here is the scale harmonised with inversions of C6 and D diminished.



The diminished chord creates a strong resolution on to the tonic 6th chord and generates potentially interesting harmonic movement over a tonic chord.

Here is a ii V I chord melody lick using this idea.

(C6 Do C6 Do C6)